

Johnny Be Good

Chuck berry
arr. Jennifer Bain

♩ = 140

Intro **11**

Verse 1

Guitar 1

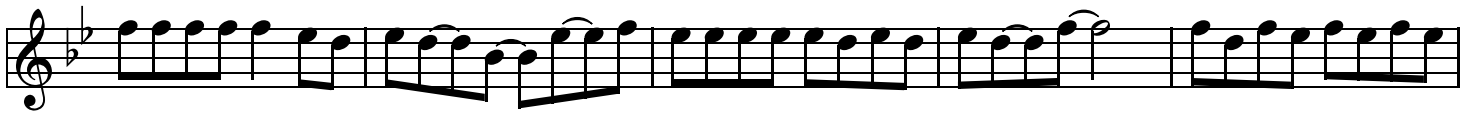


Chorus 1

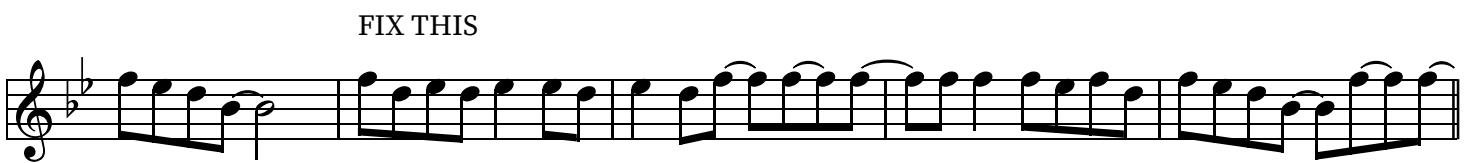


FIX THIS

Verse 2



FIX THIS



Chorus 2

Musical staff for Chorus 2, first line. It begins with a treble clef and a key signature of two flats. The melody consists of eighth notes with slurs, including some rests.

Musical staff for Chorus 2, second line. It continues the melody from the first line, ending with a final note and a fermata.

Solo 12

12

Verse 3

Musical staff for Solo and Verse 3, first line. It starts with a rest, followed by two measures of a solo (indicated by a thick black bar) and then the beginning of Verse 3.

Musical staff for Solo and Verse 3, second line. It continues the Verse 3 melody.

FIX THIS

Outro

Musical staff for FIX THIS and Outro, first line. It contains the first part of the 'FIX THIS' section and the start of the 'Outro' section.

FIX THIS

FIX THIS

Musical staff for FIX THIS, second line. It continues the 'FIX THIS' melody.

3

Musical staff for FIX THIS, third line. It concludes the 'FIX THIS' section with a final note and a fermata.

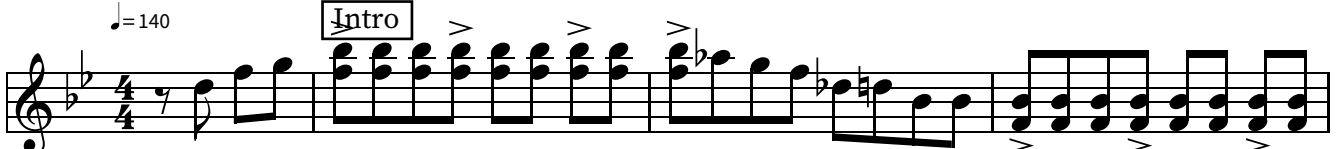
Johnny Be Good

Chuck berry
arr. Jennifer Bain

Guitar 2

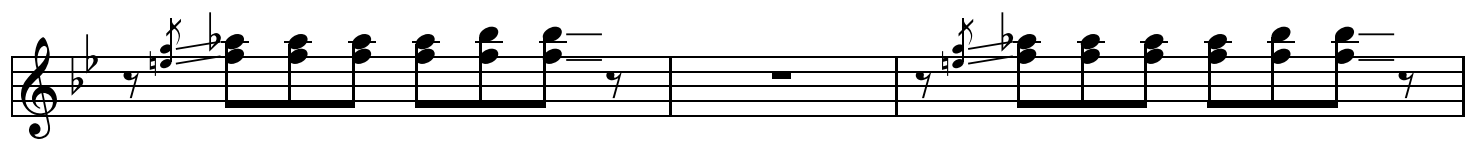
$\text{♩} = 140$

Intro



Verse 1 12

Chorus 1



Verse 2 2 12



Chorus 2



Solo

The Solo section consists of seven staves of music. The first staff begins with a 'Solo' box and contains a sequence of chords with accents (>) above them. The second staff features a 7/8 time signature and includes a double bar line with a repeat sign. The third staff continues the chordal progression with accents. The fourth staff has a 7/8 time signature and includes a double bar line with a repeat sign. The fifth staff continues the chordal progression. The sixth staff has a 7/8 time signature and includes a double bar line with a repeat sign. The seventh staff concludes the solo section with a final chord.

Verse 3
12

Verse 3 is a single staff of music. It begins with a double bar line and a repeat sign, followed by a series of chords. The number '12' is written below the staff, indicating the measure number. The staff ends with a double bar line and a repeat sign.

Outro

The Outro section consists of three staves of music. The first staff begins with a double bar line and a repeat sign, followed by a series of chords. The second staff continues the chordal progression. The third staff concludes the outro section with a final chord.

Johnny Be Good

Chuck berry
arr. Jennifer Bain

Guitar 3

$\text{♩} = 140$

Intro

2

mf

E⁵

B⁵

F⁵

E⁵

B⁵

Verse 1

B⁵

G⁵

B⁵

F⁵

B⁵

Chorus 1

B⁵

E⁵

B⁵

Musical staff with treble clef and key signature of two flats. The staff contains a sequence of chords: F5 (F4-G4-A4) and B5 (B4-C5-D5). The notes are grouped in pairs, suggesting a guitar strumming pattern.

Verse 2

Musical staff with treble clef and key signature of two flats. The staff contains a sequence of chords: B5 (B4-C5-D5). The notes are grouped in pairs.

Musical staff with treble clef and key signature of two flats. The staff contains a sequence of chords: E5 (E4-F4-G4) and B5 (B4-C5-D5). The notes are grouped in pairs.

Musical staff with treble clef and key signature of two flats. The staff contains a sequence of chords: F5 (F4-G4-A4) and B5 (B4-C5-D5). The notes are grouped in pairs.

Chorus 2

Musical staff with treble clef and key signature of two flats. The staff contains a sequence of chords: B5 (B4-C5-D5). The notes are grouped in pairs.

Musical staff with treble clef and key signature of two flats. The staff contains a sequence of chords: E5 (E4-F4-G4) and B5 (B4-C5-D5). The notes are grouped in pairs.

Musical staff with treble clef and key signature of two flats. The staff contains a sequence of chords: F5 (F4-G4-A4) and B5 (B4-C5-D5). The notes are grouped in pairs.

Solo

Musical staff with treble clef and key signature of two flats. The staff contains a sequence of chords: B5 (B4-C5-D5). The notes are grouped in pairs.

Musical staff with treble clef and key signature of two flats. The staff contains a sequence of chords: E5 (E4-F4-G4) and B5 (B4-C5-D5). The notes are grouped in pairs.

Musical staff with treble clef and key signature of two flats. The staff contains a sequence of chords: F5 (F4-G4-A4) and B5 (B4-C5-D5). The notes are grouped in pairs.

A musical staff in G minor (one flat) showing a sequence of chords: G5, G5, G5, G5, G5, G5, G5. The first three measures contain a quarter note followed by a whole rest. The last four measures contain a quarter note.

A musical staff in G minor with a continuous eighth-note accompaniment. The first four measures are marked with E5, and the remaining six measures are marked with B5.

A musical staff in G minor with a continuous eighth-note accompaniment. The first four measures are marked with F5, and the remaining six measures are marked with B5.

Verse 3

A musical staff in G minor with a continuous eighth-note accompaniment, marked with B5.

A musical staff in G minor with a continuous eighth-note accompaniment. The first four measures are marked with E5, and the remaining six measures are marked with B5.

A musical staff in G minor with a continuous eighth-note accompaniment. The first four measures are marked with F5, and the remaining six measures are marked with B5.

Outro

A musical staff in G minor with a continuous eighth-note accompaniment, marked with B5.

A musical staff in G minor with a continuous eighth-note accompaniment. The first four measures are marked with E5, and the remaining six measures are marked with B5.

A musical staff in G minor with a continuous eighth-note accompaniment. The first four measures are marked with F5, and the remaining six measures are marked with B5. The piece concludes with a final chord and a whole rest.

Johnny Be Good

Chuck berry
arr. Jennifer Bain

$\text{♩} = 140$
Guitar 4

Intro

Verse 1

Chorus 1

Verse 2

Chorus 2



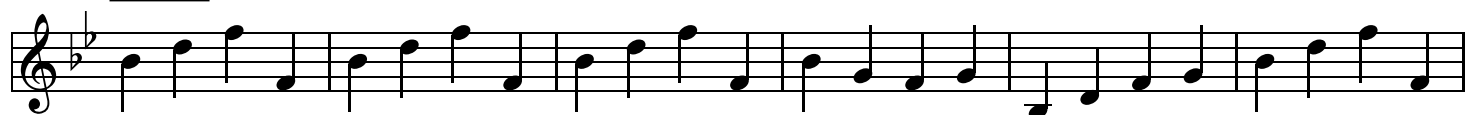
Solo



Verse 3



Outro



Johnny Be Good

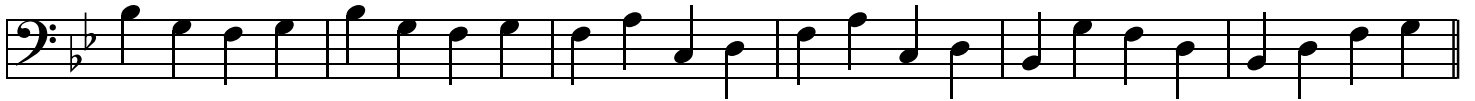
Chuck berry
arr. Jennifer Bain

♩ = 140

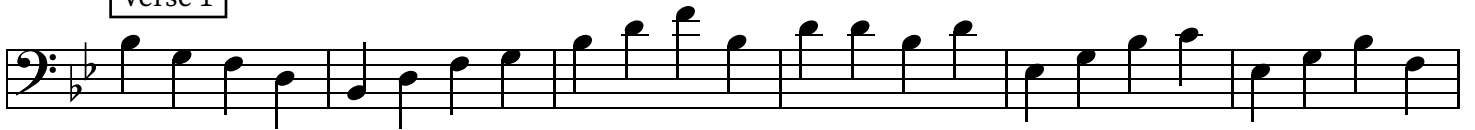
Guitar 4 (bass clef)

Intro

2



Verse 1



Chorus 1



Verse 2



Chorus 2



